

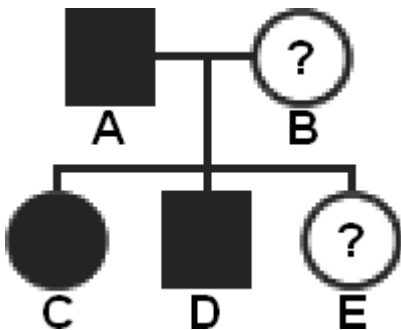
Tier 2 Intervention

Patterns of Inheritance

In order to take form C of the quiz, you must complete the following questions correctly.

1. In a punnett square, using B = Black hair and b = blonde hair, if you have a male who is heterozygous crossed with a homozygous Recessive female, what percent of their offspring will have Blonde hair (show your Punnett square)?
2. Explain the Theory that was accepted for inheritance during Mendel's life.
3. Cross 2 heterozygous flowers. The red genotype (R) is dominate, and white is recessive (r) what % of the offspring will show the red phenotype (show your Punnett square)?
4. In the pedigree above, the shaded individuals are homozygous recessive.

What is the Genotype for individual B? How do you know?



5. Two spotted leopards produce a litter of four cubs. Three of the cubs are spotted and one is solid black. The spotted coat is **probably** what type of trait? Why?