

Karyotyping Worksheet

4 5

A horizontal number line with tick marks at each integer from 6 to 12. The numbers 6, 7, 8, 9, 10, 11, and 12 are labeled below the line.

_____ 13 14 15

16 17 18

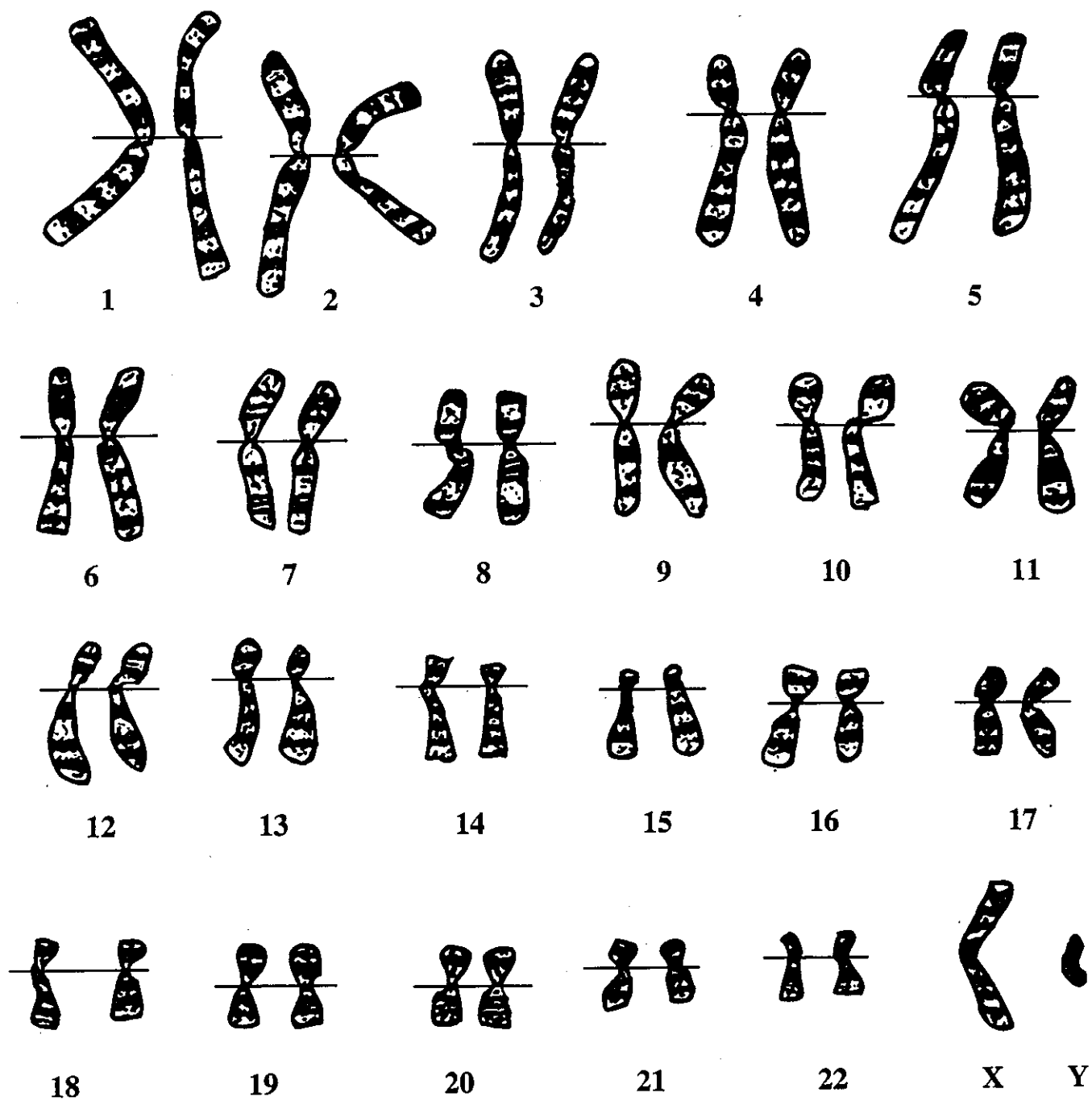
19 20

21
22

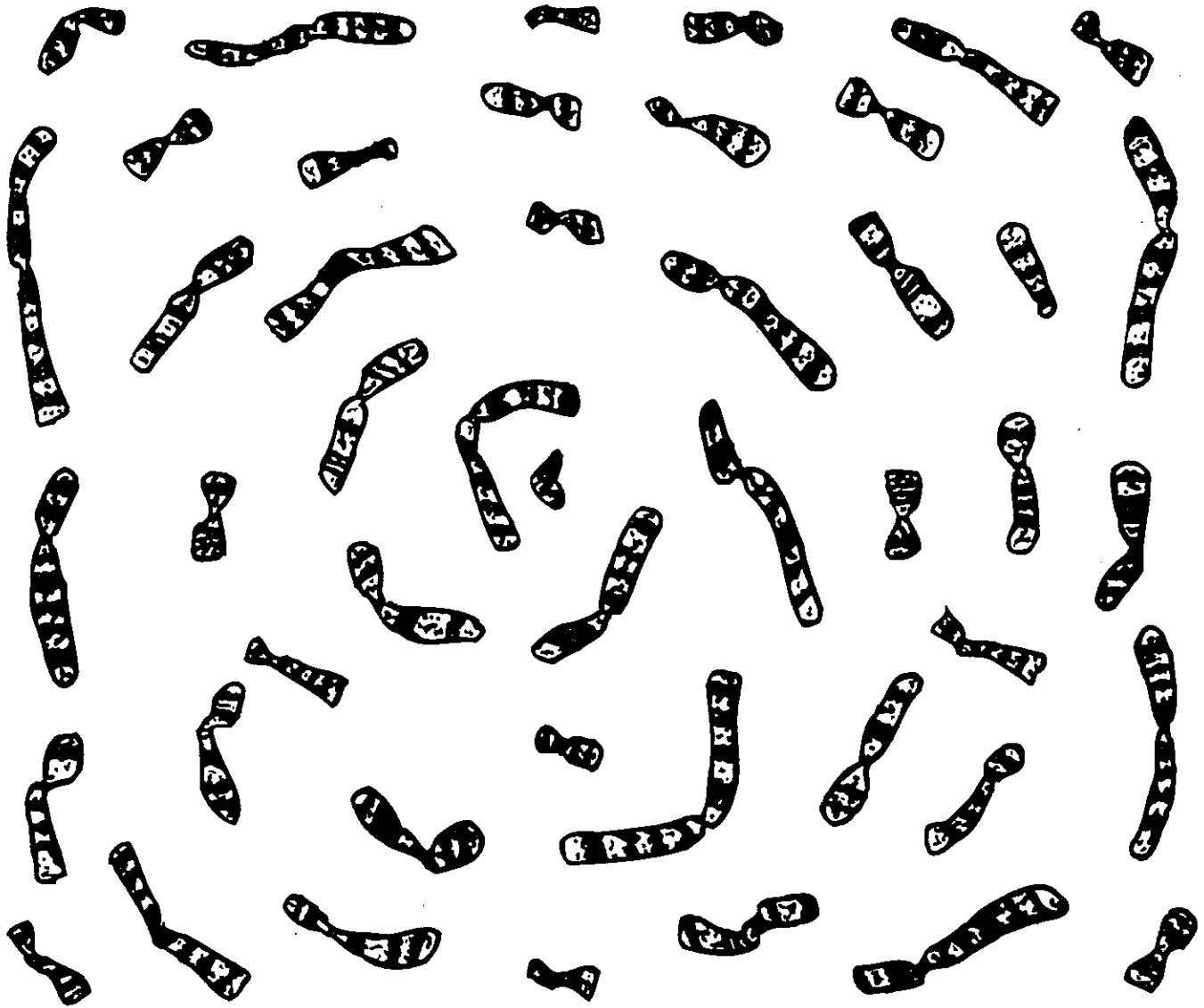
§

Describe any chromosome abnormalities you have discovered. _____

© 1998 Flinn Scientific, Inc. All Rights Reserved. Reproduction permission is granted only to science teachers who have purchased the Human Karyotyping Kit, Catalog No. FB1111, from Flinn Scientific, Inc. No part of this material may be reproduced or transmitted in any form or by any means, electronic or mechanical, including, but not limited to photocopy, recording, or any information storage and retrieval system, without permission in writing from Flinn Scientific, Inc.



Chromosome Smear #6



Instructions:

1. Use scissors to cut out the individual chromosomes.
2. Match homologous pairs of chromosomes and place them on the worksheet in their appropriate space. Use the line provided to line up the centromere region on each chromosome. Use the shape, size, banding patterns, and group descriptions to arrange the karyotype.
3. When your chromosomes have been classified and you are confident of their identity, tape them to your worksheet and answer the questions on the worksheet.

BFB1111A