

## Intervention: Cells Webquest

## WEBSITE #1

1. What is a CELL?
2. What does it mean to be UNICELLULAR?
3. Identify an organism that is UNICELLULAR: \_\_\_\_\_
4. What does it mean to be MULTICELLULAR?
5. Identify an organism that is MULTICELLULAR: \_\_\_\_\_

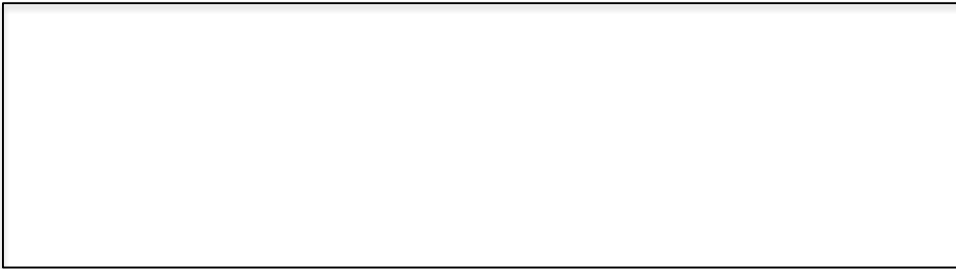
## WEBSITE #2:

1. There are two types of cells. PROKARYOTIC= \_\_\_\_\_  
Eukaryotic= Plants and \_\_\_\_\_
2. What types of cells do YOU have (PROKARYOTIC or EUKARYOTIC)? \_\_\_\_\_
3. Which type of cell is more complex (complicated)? \_\_\_\_\_
4. Which type of cell is more simple? \_\_\_\_\_

## WEBSITE #3: Click start animation.

This is a picture of \_\_\_\_\_ which is a type of PROKARYOTIC CELL!

DRAW A ROUGH SKETCH OF THE BACTERIA BELOW:

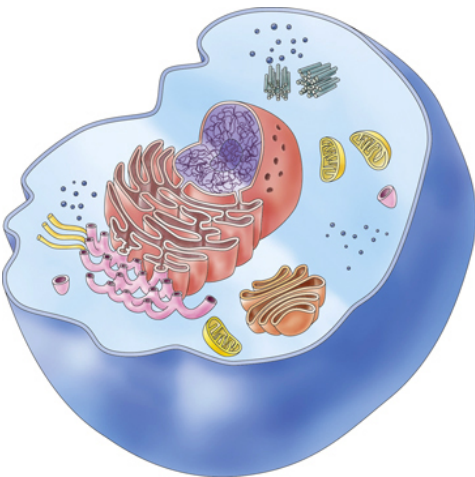


## WEBSITE #4:

CLICK ON the eukaryotic cell

CLICK ON start the animation, choose animal cell

Using the model IDENTIFY 5 cell parts:



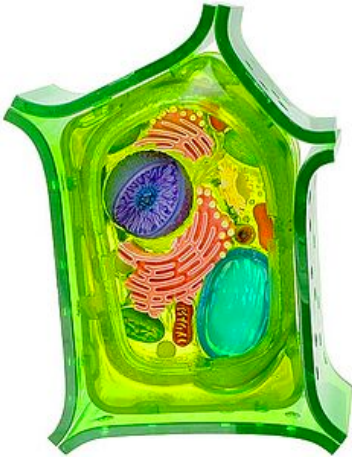
1. Click on CYTOSKELETON. What is the job of the CYTOSKELETON?
2. Which part of the cell surrounds the cell and allows molecules in and out. This cell part also has holes in it and is said to be SEMI-PERMEABLE.

3. Which cell part contains DNA? \_\_\_\_\_

4. Which cell part is the storage center for food and water! \_\_\_\_\_

Now go back and CLICK ON THE "PLANT CELL". Again, IDENTIFY 5 cell

parts in the diagram below.



NOT ON THE WEBSITE: After observing both plant and animal cells. IDENTIFY TWO DIFFERENCES between them!

1. \_\_\_\_\_
2. \_\_\_\_\_

Watch the video on the cell theory.

What are the 3 parts to the cell theory?

- 1.
- 2.
- 3.

Who named cells?

Why did he name them cells?