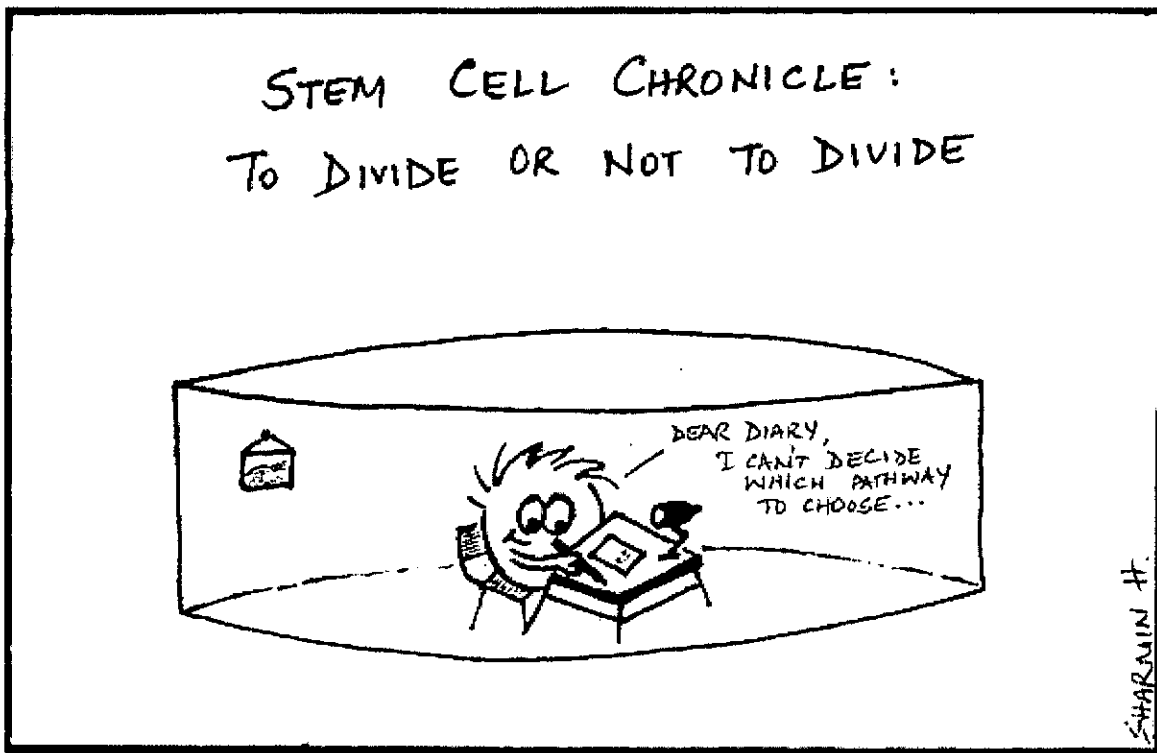


Cells



Standard 2: Students will understand that all organisms are composed of one or more cells that are made of molecules, come from preexisting cells, and perform life functions.

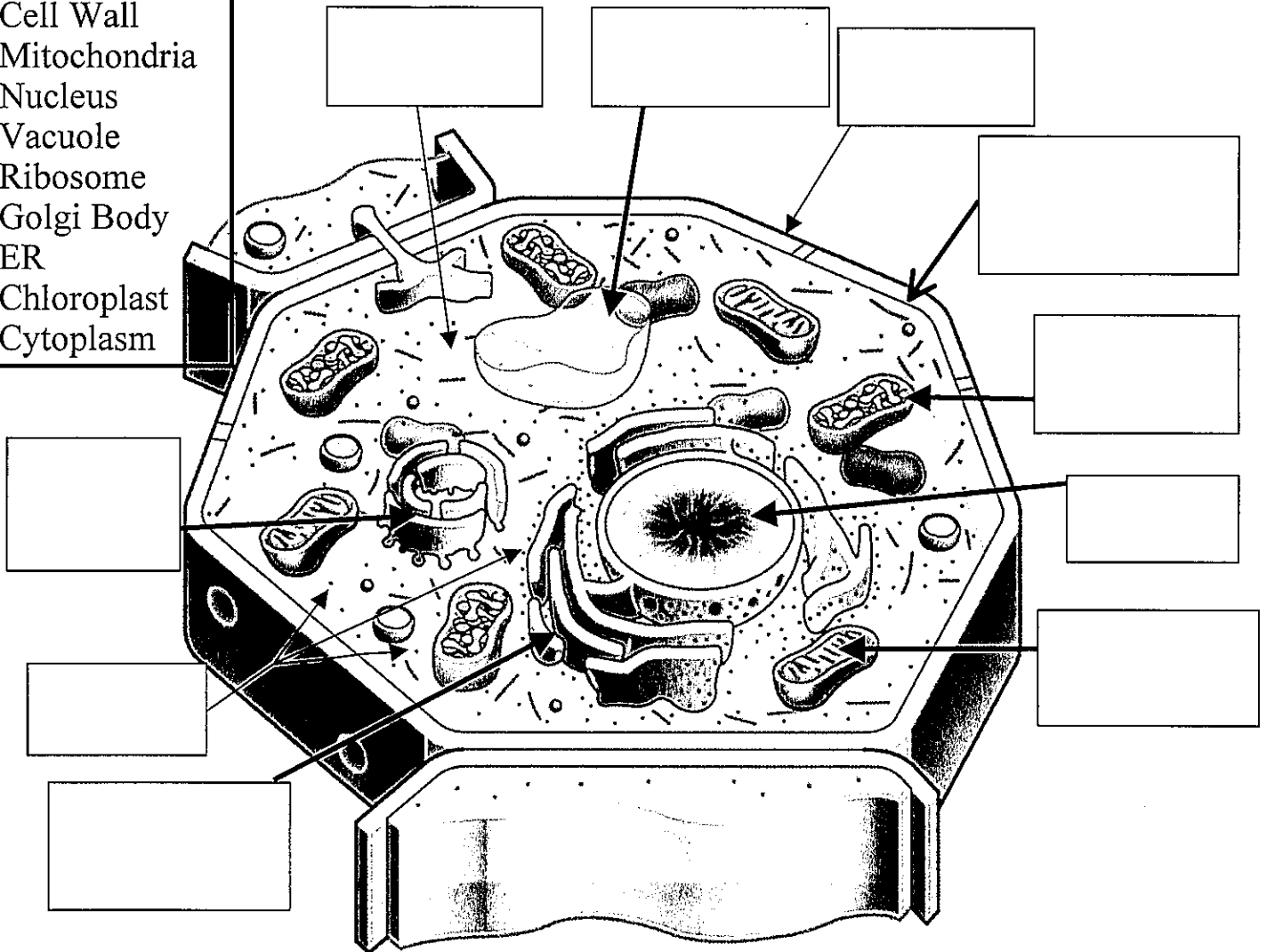


Name: _____

Date: _____

Word Bank
 Cell Membrane
 Cell Wall
 Mitochondria
 Nucleus
 Vacuole
 Ribosome
 Golgi Body
 ER
 Chloroplast
 Cytoplasm

Animal and Plant Cells Worksheet



Questions:

1. Which type of cell is this?
2. How do you know which type of cell it is?

Source: Oxford Illustrated Science Encyclopedia:
<http://www.oup.co.uk/oxed/children/oise/pictures/nature/>