



Name: _____

Date: _____

THE WATER CYCLE

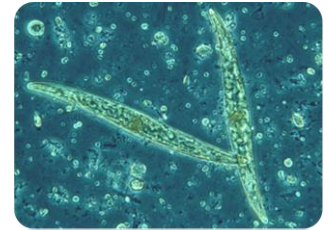
POWERPOINT WORKSHEET

THE IMPORTANCE OF WATER

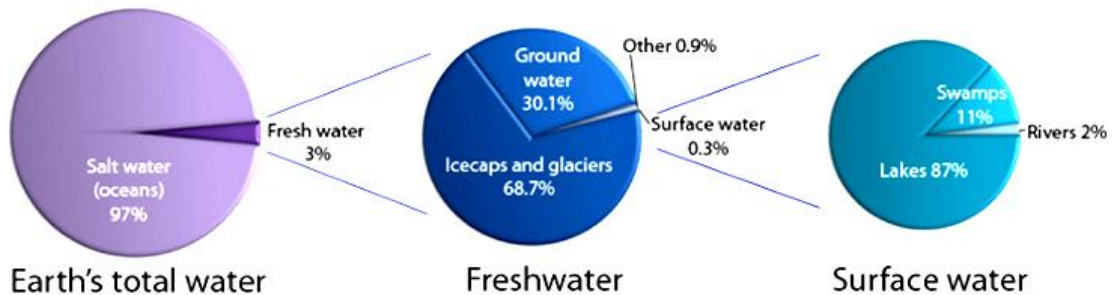
1. How much of the Earth is covered in water?
2. What is special about Earth's aquatic ecosystems?



3. What is phytoplankton and why is it important?



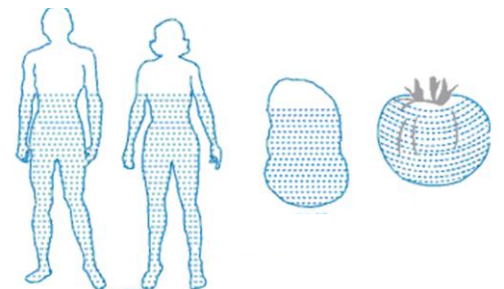
THE DISTRIBUTION OF EARTH'S WATER



4. What is the distribution of the salt water and fresh water on this planet?
5. How much fresh water is easily available to be used?

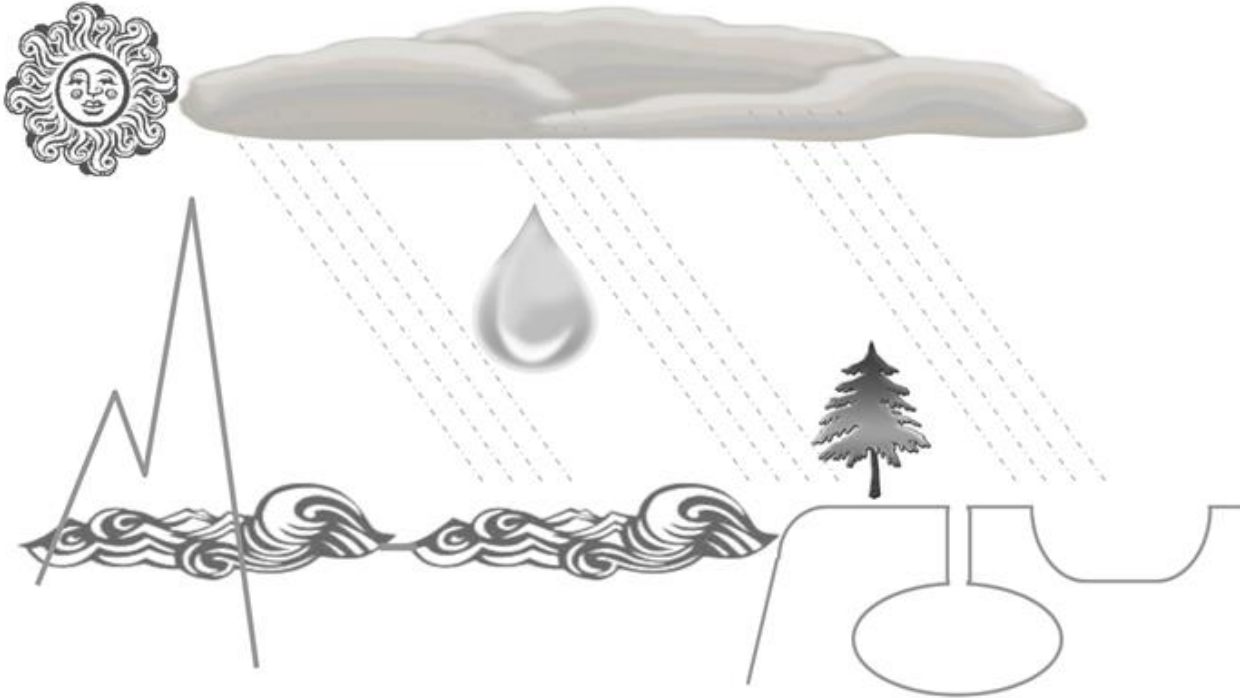
WATER WITHIN LIVING THINGS

6. How much water is found in each of the following organisms?
 - a) human ___ %
 - b) potato ___ %
 - c) tomato ___ %



THE WATER CYCLE DIAGRAM

7. **Label** the components and processes in the **water cycle diagram** below, while completing the notes.



8. What is a **glacier**?

9. What is an **iceberg**? Describe one fact about icebergs.

10. What is an **aquifer**? Describe two ways the water from aquifers can be accessed.

2. Define each of the following **processes** in the water cycle and answer the questions for the processes.

Processes	Definitions and Questions
a) evaporation	<i>Definition:</i>
b) melting	<i>Definition:</i>
c) freezing	<i>Definition:</i>

Processes	Definitions and Questions
d) sublimation	<p><i>Definition:</i></p> <ul style="list-style-type: none"> • How is wet laundry able to dry outside in the winter time?
e) deposition	<p><i>Definition:</i></p>
f) condensation	<p><i>Definition:</i></p> <ul style="list-style-type: none"> • Why can you see your breath in the winter time but not in the summer time?
g) transpiration	<p><i>Definition:</i></p> <ul style="list-style-type: none"> • How is transpiration involved in cloud formation?
h) precipitation	<p><i>Definition:</i></p> <ul style="list-style-type: none"> • Which form of precipitation is the largest?
i) percolation	<p><i>Definition:</i></p> <ul style="list-style-type: none"> • How would deforestation effect percolation?
j) run-off	<p><i>Definition:</i></p> <ul style="list-style-type: none"> • What are three destructive effects of run-off?