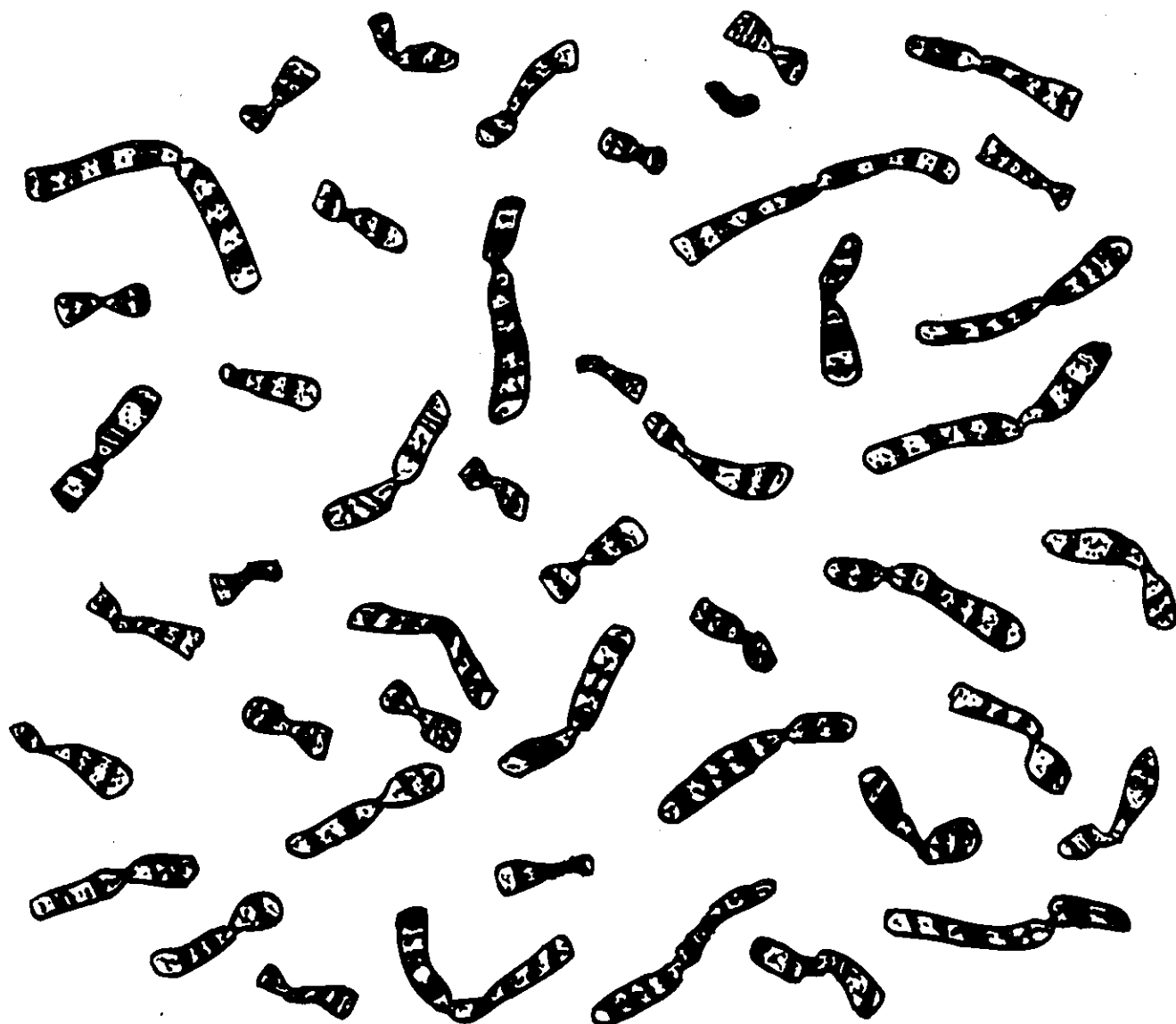


Chromosome Smear #1



Instructions:

1. Use scissors to cut out the individual chromosomes.
2. Match homologous pairs of chromosomes and place them on the worksheet in their appropriate space. Use the line provided to line up the centromere region on each chromosome. Use the shape, size, banding patterns, and group descriptions to arrange the karyotype.
3. When your chromosomes have been classified and you are confident of their identity, tape them to your worksheet and answer the questions on the worksheet.

BFB1111A